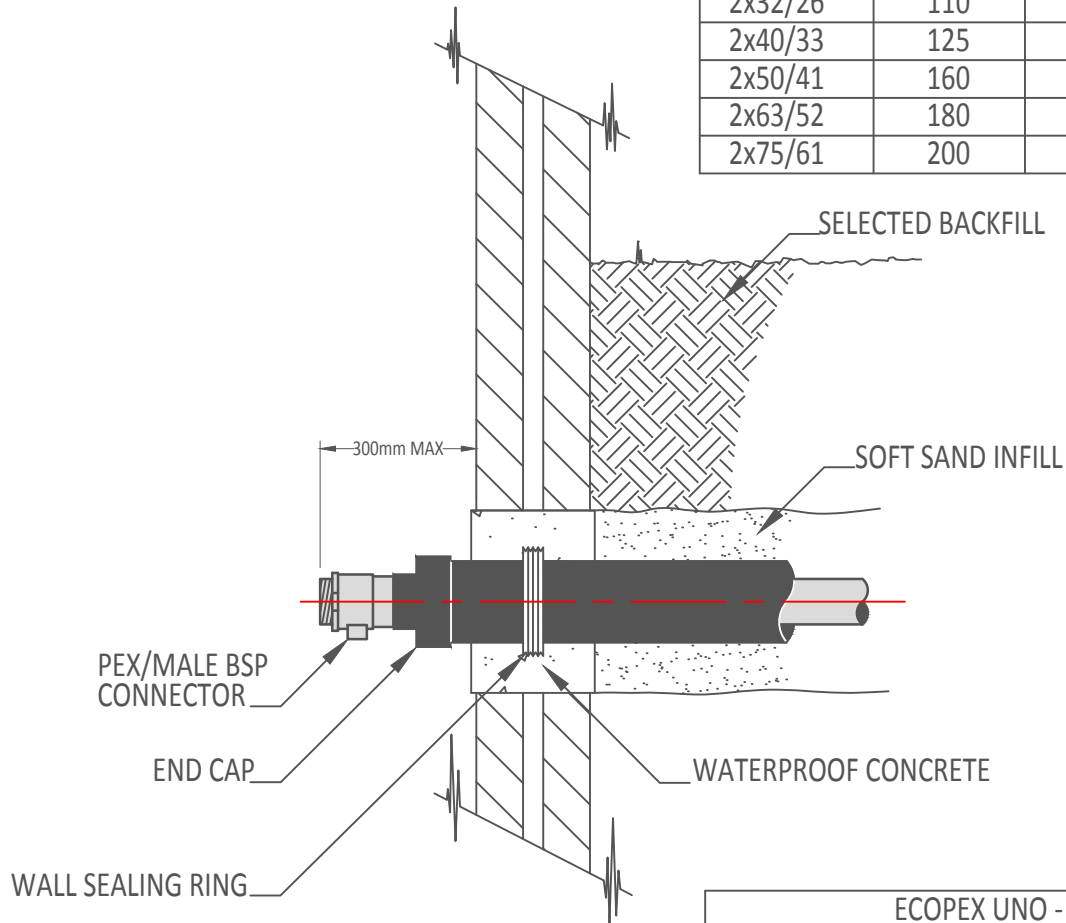


ECOPEX DUO - HEATING			
PIPE SIZE (O.D./I.D)(mm)	CASING SIZE (O.D)(mm)	ENTRY HOLE (HEIGHT)(mm)	ENTRY HOLE (WIDTH)(mm)
2x25/20	90	290	290
2x32/26	110	310	310
2x40/33	125	325	325
2x50/41	160	360	360
2x63/52	180	380	380
2x75/61	200	400	400

ECOPEX UNO - HEATING			
PIPE SIZE (O.D./I.D)(mm)	CASING SIZE (O.D)(mm)	ENTRY HOLE (HEIGHT)(mm)	ENTRY HOLE (WIDTH)(mm)
25/20	75	275	450
32/26	75	275	450
40/33	90	290	480
50/41	110	310	520
63/52	125	325	550
75/61	140	340	580
90/74	160	360	620
110/90	160	360	620
125/102	180	380	660
140/115	200	400	700
160/131	250	450	800



FOR UNO PIPES MEASUREMENTS ARE BASED ON TWO PIPES WITHIN THE ENTRY HOLE

ECOPEX DUO - SANITARY			
PIPE SIZE (O.D./I.D)(mm)	CASING SIZE (O.D)(mm)	ENTRY HOLE (HEIGHT)(mm)	ENTRY HOLE (WIDTH)(mm)
28/20+22/16	290	290	290
32/25+22/16	110	310	310
40/29+28/20	125	325	325
50/36+32/23	125	325	325

ECOPEX UNO - SANITARY			
PIPE SIZE (O.D./I.D)(mm)	CASING SIZE (O.D)(mm)	ENTRY HOLE (HEIGHT)(mm)	ENTRY HOLE (WIDTH)(mm)
22/16	75	275	450
28/20	75	275	450
32/25	75	275	450
40/32	90	290	480
50/40	110	310	520
63/50	125	325	550

vargo
pipes

VARGO PIPES LTD, WEST HOUSE, WEST STREET, BUCKINGHAM, MK18 1HE.
Tel: 01280 814 198. Email: sales@vargopipes.co.uk www.vargopipes.co.uk

PRE-INSULATED PIPE SYSTEM:

ECOPEX - UNO & DUO

DETAIL NAME:

HORIZONTAL TERMINATION

DRAWING No:

VP2.5

DRAWN BY:

C.AUSTEN

DRAWN DATE:

15.03.18

SCALE:

N.T.S

REV:

-